



Yangedi Rd

	Application Area for Clearing Permit
	Reserve 25911 Boundary
	Cadastre
	Road



Shire of Serpentine-Jarrahdale
Application for a Clearing Permit
Yangedi Airfield Reserve 25911

SCALE = 1 : 4 000

DATE: 1/08/2006

Disclaimer: Material on this map is protected by copyright and trademark laws. The information contained in this map is provided on an "as is" basis. No responsibility is accepted about the accuracy or completeness of the information, and we are not responsible for any damage arising from the use of information on this map.

Copyright © 2006 Shire of Serpentine Jarrahdale. All Rights Reserved.

Material from this map may not be reproduced in any way, without permission.



SUPPORTING INFORMATION FOR YANGEDI AIRFIELD RESERVE

PROPOSAL

To clear 0.47 hectares native and exotic bushland of Crown Reserve 25911 for the purpose of aircraft hangers.

BACKGROUND

Crown Reserve 25911, Lot 164 Yangedi Road, Hopeland, covering a total of 64.7 hectares is vested in the Shire of Serpentine Jarrahdale for the purpose of recreation. This reserve is also part of the Bush Forever site 378. It is leased to the Sports Aircraft Builders Club of WA Inc. whom are registered with the Civil Aviation Safety Authority.

Appendix 1 shows the proposed area of Reserve 25911 that pertains to this clearing application.

The Sports Builders Club of WA Inc. has leased the reserve since 1973, the current lease expiring in 2012. The club's lease was renewed in 2002 with no environmental conditions or fire management specifications. During the time the club has leased the land it has been developed to establish a private airfield with infrastructure including 67 hangars, 3 km of runway and a clubhouse. An informal caravan park also exists and the caravan park facilities have not been approved use by Council. Currently, the club house is being extended.

Along with sport flying, club members build, restore and maintain aircraft at the site. The membership of the club has rapidly increased since its inception from 42 members to 180 members in 2005. The current hangar infrastructure can no longer accommodate the needs of the club members. It is for this reason that the application to clear a small area of the reserve to erect eleven more hangars has been submitted.

In 2001 the club established a ground water extraction point for ground based fire units and aerial bombers. These facilities are available to local and state emergency service, and FESA helicopters have frequently used them for training. Due to this initiative the club were recently awarded a citizenship award.

A close partnership has existed between the Sports Aircraft Builders of Western Australia Inc and the Shire for over twenty years in the development of the site. This clearing proposal was taken to council by the Sports Aircraft Builders Association. Council resolved at its March 2006 meeting the following:

CGAM112/03/06 COUNCIL DECISION

That Council grants delegated authority to the Chief Executive Officer to lodge a clearing application with the Department of Environment and a planning application with the Western Australian Planning Commission for development on Crown Reserve 25911. Where further development is required it should be subject to a reserve management plan prepared in conjunction with the Serpentine Jarrahdale Landcare Centre.

CARRIED 9/0

BIODIVERSITY

Yangedi Road Airfield Reserve is one of five lots that make up the Bush Forever Site 378, 154.9 ha. Almost the entire reserve is part of this Bush Forever site (Appendix 2). The reserve also contains an Environmental Protection Policy wetland and Conservation Category Wetland. The dominant native species of these areas are *Melaleuca pressiana* and vegetated low open woodland of *Kunzea glabrescens* and scrub *Regelia cilia*. The wetland

area near the intersection of the two runways is regularly mowed to provide a line of site and the understory is now dominated by introduced grasses and is in a degraded condition.

Searches of the Threatened Ecological Communities and Declared Rare Flora databases showed that no threatened ecological communities or declared rare flora occur on the reserve.

Two vegetation complexes occur in the Reserve. The table below shows their approximate distribution across the site, the Shire and the Bush Forever study site.

		Southern River Complex (hectares)	Bassendean Complex (hectares)
Yangedi Airfield	2006 statistics	14	18
	Pre European	34	30
Serpentine Jarrahdale	1998 statistics	732	3033
	Pre European	7653	9854
Bush Forever Study Area	1998 statistics	5370	10919
	Pre European	31148	46220

Southern River Complex is defined as open woodland of *Eucalyptus calophylla* – *E. marginata* – *Banksia* species with fringing woodland of *E. rudis* – *Melaleuca raphiophylla* along creek beds. Bassendean complex – central and south is defined as containing vegetation ranges from woodland of *Eucalyptus marginata* – *Allocasuarina fraseriana* – *Banksia spp.* to low woodland of *Melaleuca* species and sedgelands on the moister sites.¹

The north western side contains vegetated upland of *Banksia attenuata*, *B. menziessii* and scattered *Eucalyptus marginata*, *B. ilicifolia* and *Allocasuarina fraseriana* woodland.

Most of the vegetation is in good to excellent condition with disturbances of weed species and *Phytophthora cinnamomi* “dieback” around the edges. The area in the centre of the reserve is in a degraded condition having been cleared for infrastructure and the grassed area regularly mowed.

There is evidence, in the form of diggings, of the Southern Bandicoot or Quenda (*Isoodon obesulus*) occurring on the reserve. This species is listed by CALM under the *Wildlife and Conservation Act 1950* as a priority 4 species, in need of monitoring.

INDIGENOUS HERITAGE

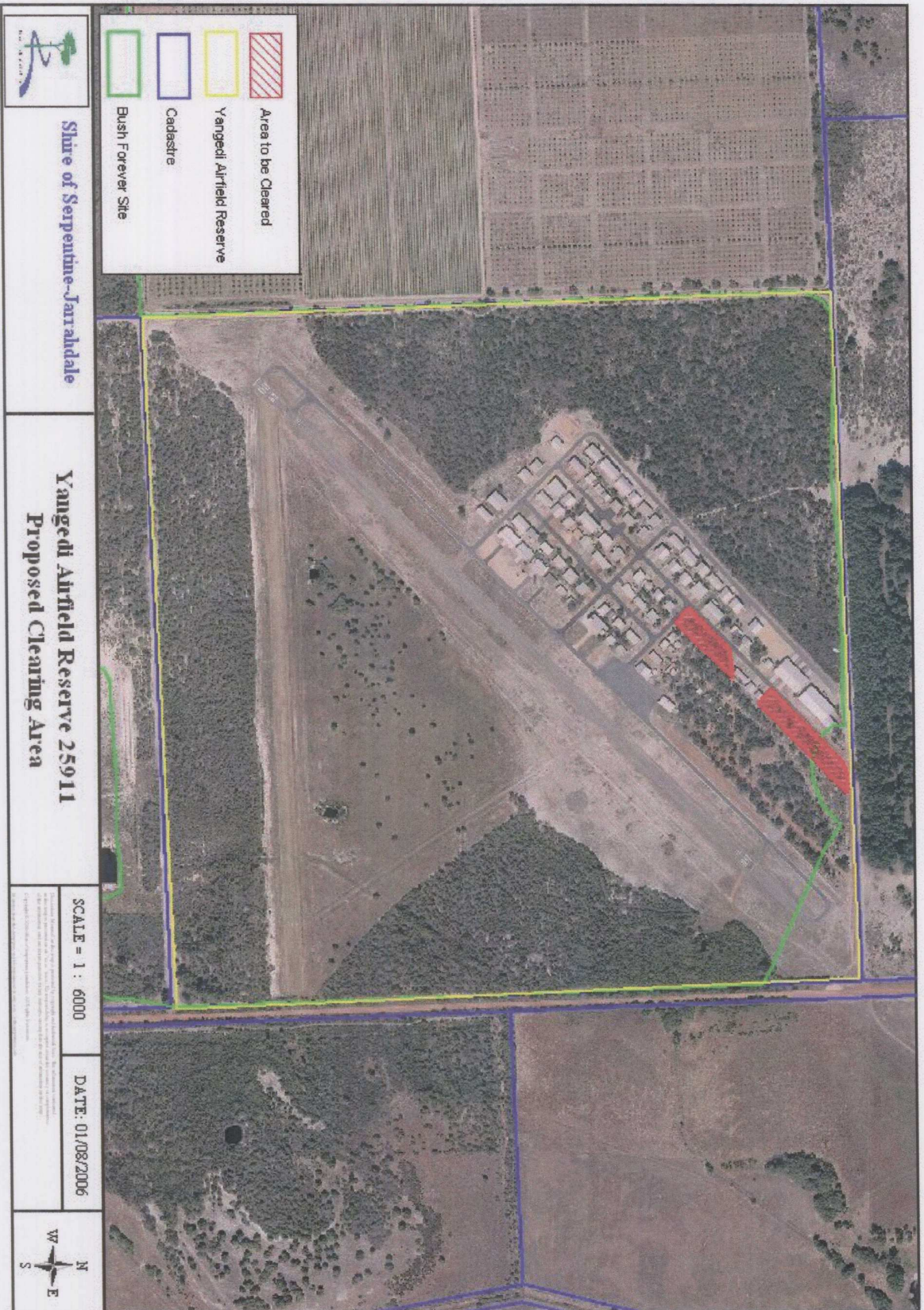
A search of the Department of Indigenous Affairs register showed that no Aboriginal Heritage sites exist on the reserve. In close proximity to the reserve is the mythological and ceremonial site of Serpentine River and the historical site of Slaven Hills Springs.

No ethnographic surveys have been undertaken.

CONCLUSION

The above information is intended to provide the Department of Environment information on the values of Yangedi Airfield Reserve and background of the Sport Aircraft Builders Club of WA Inc. The area intended to be cleared and developed is less than one hectare of the reserve, is fragmented by infrastructure and is degraded. The Shire is committed to providing assistance to the club in producing an environmental management plan and have allocated \$5 000 in the 2006/2007 budget for this purpose.

¹ Department of Environment (2000) Bush Forever Volume 2



APPENDIX 2



-  EPP LAKE
-  BUSH FOREVER SITE
-  YANGEDI RESERVE 25911

YANGEDI ROAD AIRFIELD AND ADJACENT BUSHLAND

